



YANGTZE COOLING ICE SYSTEM

2022 New Edition
Product Presentation

Yangtze Cooling Ice Systems Co., Ltd

Address: Xinan Wumagang, Sihui Zhaoqing City, Guangdong, China
TEL: +86-0757-81019142
E-mail: coldroom@yangtze cool.com
Website: www.yangtze cool.com



(Learn more)



Yangtze Cooling Ice Systems Co., Ltd



About Us

Yasngtze cooling is a professional on the high quality polyurethane panels to construct coolrooms & freezers are light weight, high strength, good heat insulation, anti-corrosive, age-resistant, moth proof, non-poisonous and non-mould, preserving heat, easy assembling and disassembling.

Our product applications covers in wide ranges including: energy efficient cool rooms, freezers, mobile cool rooms, food processing plants, farm coolrooms, portable buildings, warehouse & factories, clean rooms, laboratories and hospitality applications.

Our core Service:
Production & Sales;
Design & installation;
Repair & maintenance.

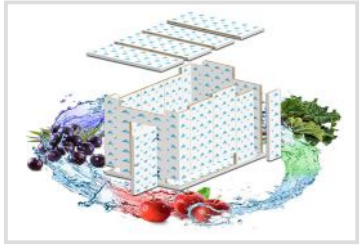


FOOD SAFETY

Food safety impacts our reputation and public health. Ensure food safety during entire refrigeration is our important job. The cold storage & refrigeration equipment units can be able to keeping all kinds of food and drinks which require changeable temperature.

ENVIRONMENT PROTECTION

We use environmental friendly R404A refrigerant. BITZER, COPELAND, SCHNEIDE Compressor series and refrigeration accessories units adopt strict German, American, French production procedures which reduces noise when operating.



Fresh Vegetable/Beverage/Fish/Meat/Cold Storage

- Polyurethane insulated panels, density 40-42/kg/m³ with fire retardant which are moulded with male / female joints and held by eccentric action cam-locks
- The visible exterior surfaces of the panels are coated, stainless steel with durable scratch resistant polyester, which is classified as food safe.

- Standard thickness
- Clean workshop/operation room: 50mm
- Vegetable/Beverage/storage of fresh meat or fish : 100mm
- Frozen storage select : 150mm
- Blast freezer select: 200mm

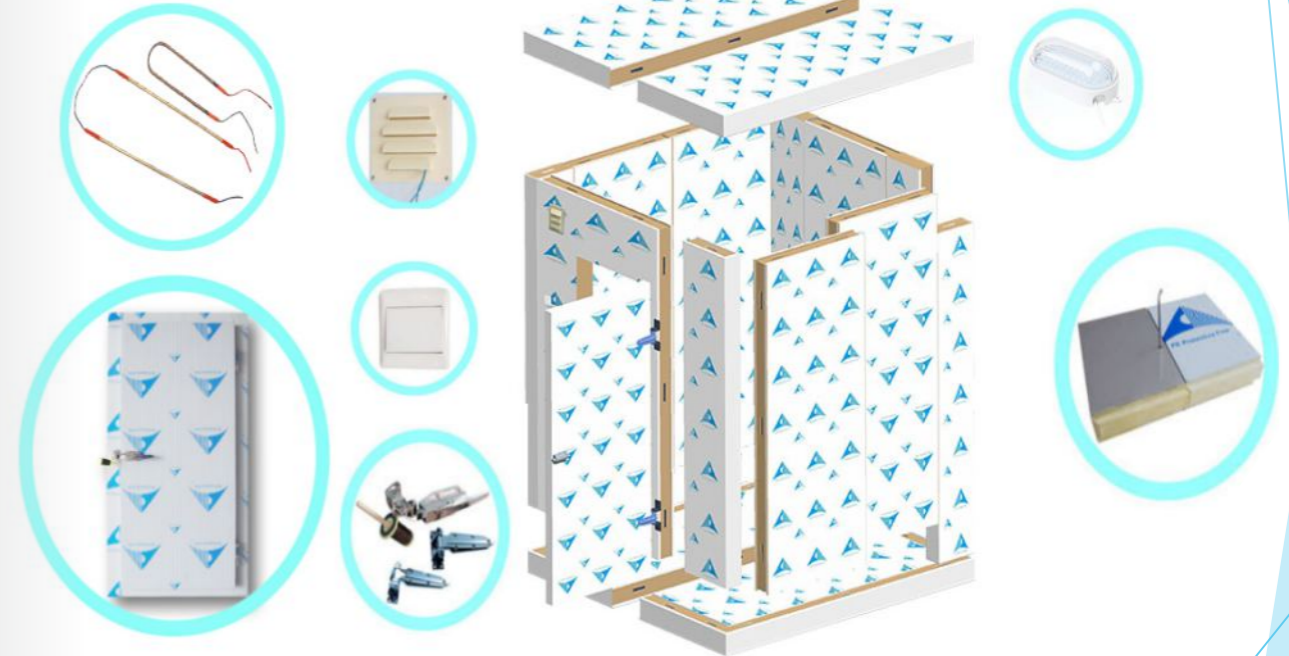


- Doors select swing door/sliding door/double open door

- Door are already pre-mounted on a panel for ease of assembly in the field.
- The door is supplied with hinges and a lockable door handle with a safe release, which overrides the lock at all times.
- Door threshold and surround is fitted with a heater to prevent freezing of the gasket to the frame in low temperature models.

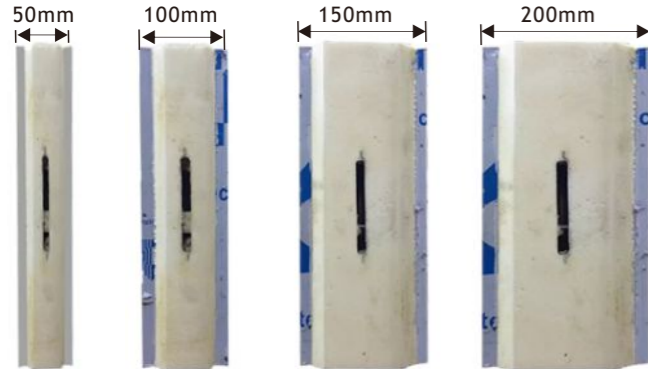


Cold Storage types	Cold temperature	Cold Storage uses
Chillerroom/ walk-in cold room	5 °C ~ -5 °C	Fruits, vegetables, flowers, dairy products, alcohol, chocolate, rice wine, fresh eggs, fresh meat and so on
Cold storage	-10 °C ~ 20 °C	Frozen fish, frozen meat, frozen poultry, frozen eggs and so on
Freezer storage	-20 °C ~ -35 °C	Fish, fresh and freeze rice products, ice cream, blood products, chemical raw materials and so on such as low-temperature storage
Other non-standard cold/Blast freezer	10 °C ~ -60 °C	Electronics, metallurgy, bio-pharmaceutical, chemical, automotive building materials industries such as aerospace industrial test ultra-low temperature freezer cold treatment



PU INSULATION PANEL

Panel Thickness	75/100/125/150/200mm
Average Density:	40-42kg/m ³
Temperature range:	+5~-10°C, -15~-60°C
Resistance to compression:	1.7kg/m ²
PPGI Sheet:	0.36 - 0.6mm
S/S Sheet:	0.46 - 0.8mm
Aluminum Sheet:	0.46 - 0.8mm
Max Length:	10,000mm
Max Corner:	950mm
Max Width:	450x450mm
Connect joint:	Cam-lock



PPGI



Aluminum



304 Stainless steel

DIAGRAM

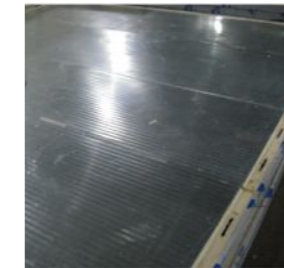
Connect : cam-lock



Wall / Ceiling panel/Corner - galvanize steel white coating



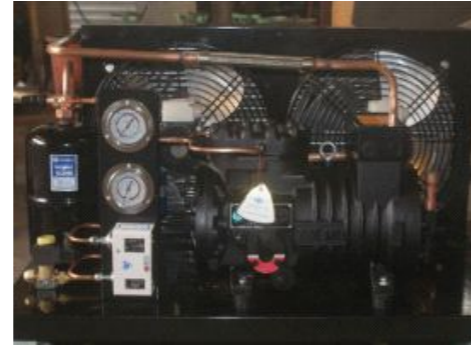
Floor panel - galvanize steel



Floor panel - aluminum



Semi-hermetic



Condensation Tem +50°C ; Evaporating temperature -25°C

No	Product Model	Compress model	Condenser Unit	Equipment Size	Ref. Capacity	Compressor Power	Condenser Power
1	BE2HP-GL	2DES-2Y	DJ-8	750x1100x480mm	2240	1.88	140W
2	BE3HP-GL	2DES-3Y	DJ15	750x1100x580mm	2240	1.88	280W
3	BE5HP-GL	4DES-5Y	DJ40	750x1100x680mm	4800	3.99	360W
4	BE8HP-GL	4TES-9Y	DJ55	1250x950x1180mm	9030	6.49	720W
5	BE10HP-GL	4PES-12Y	DJ85	1250x950x1180mm	9830	6.9	720W
6	BE15HP-GL	4HE-18Y	DJ115	1400x950x1280mm	17720	12.22	1000W
7	BE20HP-GL	4GE-23Y	DJ140	1000x750x800mm	21000	14.58	1560W
8	BE30HP-GL	6GE-34Y	DJ300	1000x750x800mm	31800	22.4	2340W
9	BE35HP-GL	6HE-35Y	DJ300	1200x850x800mm	25100	17.72	3000W
10	BE40HP-GL	6GE-40Y	DJ300	1200x850x800mm	29100	20.74	3000W

Condensation Tem +50°C ; Evaporating temperature -15°C

No	Product Model	Compress model	Condenser Unit	Equipment Size	Ref. Capacity	Compressor Power	Condenser Power
1	BE3HP-GH	2DES-3Y	DD15	750x1100x480mm	6120	3.62	140w
2	BE5HP-GH	4FES-5Y	DD30	750x1100x580mm	6580	3.88	280W
3	BE6HP-GH	4EES-6Y	DD40	750x1100x680mm	8390	5.05	360w
4	BE7HP-GH	4DES-7Y	DD60	1250x950x1180mm	10040	5.84	720W
5	BE8HP-GH	4TES-8.2Y	DD80	1250x950x1180mm	13420		720W
6	BE10HP-GH	4VES-10Y	DD100	1400x950x1280mm	12200	6.86	1000W
7	BE15HP-GH	4PES-15Y	DD140	1000x750x800mm	16680	9.38	1560W
8	BE20HP-GH	4NES-20Y	DD160	1000x750x800mm	20450	11.39	2340W
9	BE30HP-GH	6GE-30Y	DD250	1200x850x800mm	31800	17.52	3000W
10	BE40HP-GL	6GE-40Y	DJ300	1200x850x800mm	29100	20.74	3000W

Semi - Hermetic Cooling Unit



Stable performance and long service life:

The use of copper tube aluminum condenser or high-efficiency shell and tube condenser, high heat exchange efficiency, and unique valve design.

Large cooling capacity:

The energy efficiency ratio is 20% higher than that of other brands of cold storage units.

Extensive energy adjustment:

4-cylinder compressor energy adjustment range of 50%, 100%, 6-cylinder compressor energy adjustment range of 33%, 66%, 100%. When the refrigeration system conforms to changes, effective adjustments are made to reduce operating costs.

Box Type Cooling Unit (Copeland/ Emerson)

It adopts box-type integral structure, with compact structure, beautiful and light appearance, easy to install on the wall, and the inlet and outlet pipes of the unit have stop valves, which are convenient for installation and maintenance.

Stable performance:

Copeland ZB scroll series fully enclosed refrigeration compressor is used as the main engine, with low vibration, low noise and reliable operation. It uses copper tube and aluminum fin type radiator, which has high heat exchange efficiency and long service life. The Copeland scroll compressor has stronger anti-liquid shock ability, better papermaking, and patented liquid spray technology to achieve the optimization of compressor refrigeration

Energy saving and noise reduction:

is more efficient than the traditional piston design. The side outlet fan unit adopts a 6-pole motor, and the top outlet fan unit adopts an external rotor fan. The fan operates with low noise and is more energy-saving and environmentally friendly.

Advanced electronic protection technology, advanced unloading start technology, the compression components are separated from each other after shutdown, and all the pressure inside the compressor is balanced.





Monoblock

One unit is an integral unit, the evaporator, condenser, pressure machine, electric control. The whole structure is compact and the installation space is reduced, and the units are suitable for various kinds of work. Use occasion, Wall mounting, compact in size. The condenser can be automatically reported when it needs cleaning.

The condenser and evaporator are made of epoxy powder plates. Imported fully enclosed refrigeration compressor, with good performance and low noise. The utility model has the advantages of high reliability and brand new installation mode, and the installation and the use are extremely convenient, and the installation is only necessary.

To open holes in the library, the unit will be embedded, and then connected to the power supply.

Specifications

Model:	YF001HP	YF002HP	YF003HP	YF004HP	YF005HP
Nominal Power:	1HP	2HP	3HP	4HP	5HP
Compressor:	EMERSON/COPELAND				
Expansion Value:	DANFOSS	DANFOSS	DANFOSS	DANFOSS	DANFOSS
Temperature controller:	DIXELL	DIXELL	DIXELL	DIXELL	DIXELL
Capacity (w) R404A:	952	2176	2723	3892	5295
Cold Storage area:	8 m ³	16 m ³	35 m ³	47 m ³	58 m ³
Power (Kw):	0.82	1.5	2.3	3	4.05
Voltage (V):	220V	220V	220V	220-380V	380V
Evaporator Motor Power(w):	85	150	85*2	150*2	85*3
Diameter (mm):	300	300	300	300	300
The fan number:	1	1	2	2	3
Air Volume:	1600	2100	3200	4200	4800
Condenser Motor Power(w):	85	150	85*2	195*2	195*2
Diameter (mm):	300	300	300	350	350
The fan number:	1	1	2	2	2
Air Volume:	1800	3200	3600	6400	6400
Exterior size:	828x 570x 750mm	888x680x855mm	888x920x855mm	888x1120x855mm	888x1320x855mm
Hole opening size:	540 x 490mm	650x490mm	890x490mm	1090x490mm	1290x490mm
Weight kg:	32	35	42	46	51

Air cooling system-Seal hermetic

• 2HP/3HP



• 4HP/5HP



• 7HP/10HP



Scroll Air-Cooled Condensing Unit (+5°C to -5°C)

Compressor Model			ZX020BE-TFD-501	ZX030BE-TFD-501	ZX040BE-TFD-501	ZX050BE-TFD-501
Cooling capacity	Evaporating temperature +5°C	Ref.kcal	5760	8550	10870	14740
		Power.kw	2.12	2.81	3.67	5
	Evaporating temperature 0°C	kWcal	5080	7400	9470	13100
		Power	2	2.67	3.54	4.72
Evaporating temperature -5°C	kWcal	4480	6350	8240	11430	
	Power	1.9	2.57	3.46	4.5	
Temperature applied			+5°C to -5°C Optional			
Refrigerant			R404a			
Power Supply			380V-220V/50hz			
Weight (N/W-G/W)			76/114	79/117	100/121	108/152
Machine Size/mm			1029*424*840	1029*424*840	1029*424*840	1029*424*1242
Condenser	Model		DD12	DD15	DD40	DD60
	Ref.kcal		2350	3100	8000	12000
	Air volume M ³ /h		2*1653	2*1653	2*3400	2*6000
	Fan power		2*75W	2*75w	2*180w	2*448w
	Total Power		2.7	3.3	3.6	6
	Surface M ²		12	15	40	60
Weight(kg)			28	33	68	92
Overall Size (mm)			1130*380*520	1280*380*520	1520*500*620	1820*550*720

Scroll Air-Cooled Condensing Unit (-15°C to -25°C)

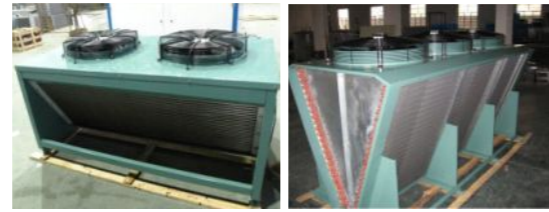
Compressor Model			ZXL020BE-TFD-501	ZXL030BE-TFD-501	ZXL040BE-TFD-501	ZXL050BE-TFD-501
Cooling capacity	Evaporating temperature -15°C	Ref.kcal	3470	4590	7280	8430
		Power.kw	2.23	2.99	4.68	5.11
	Evaporating temperature -20°C	kWcal	2920	3920	6250	7220
		Power	2.12	2.86	4.41	4.83
Evaporating temperature -25°C	kWcal	2400	3310	5270	6060	
	Power	2.01	2.73	4.15	4.57	
Temperature applied			+5°C to -5°C Optional			
Refrigerant			R404a			
Power Supply			380V-220V/50hz			
Weight (N/W-G/W)			76/114	79/117	100/121	108/152
Machine Size/mm			1029*424*840	1029*424*840	1029*424*840	1029*424*1242
Condenser	Model		Dd15	Dd22	Dj30	Dj40
	Ref.kcal		3100	4000	5100	7800
	Air volume M ³ /h		2*1563	3*1563	2*3400	2*6000
	Fan power		3*75W	2*75w	2*180w	2*448w
	Total Power		4.05	3.3	3.6	6
	Surface M ²		22	15	5.1	40
Weight(kg)			33	40	65	86
Overall Size (mm)			1280*380*520	1280*380*520	1520*500*620	1820*550*720

Condenser

- For 2HP ~ 15HP



- Type "V" for more than 15HP air cooling system



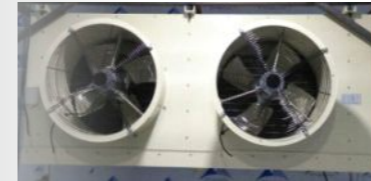
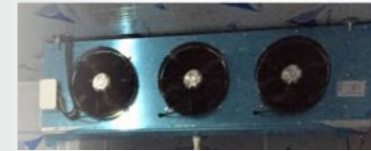
- Fan with motor



Evapoartor/Electrical component

Evapoartor

- **Material customized:**
Galvanized print coating
Aluminum
Stainless steel SS304
- **Electrical defrosti**
- **Axial flow fan**
- **Fan with motor**



Electrical component

- **Material customized:**
Galvanized print coating
Stainless steel SS304
- **Component:**
(SCHNEIDE/ZHENGTAI)
Air switch
Lack-phase protection
AC contactor
Thermal relay
Switch
Indicator
Line tank
Terminal block
Temperature controller
Wire/wire groove
Control box size



Project case display



Fruit & Vegetable project-China



Meat factory project - Philippines



Lab project-China



Warehouse project - USA



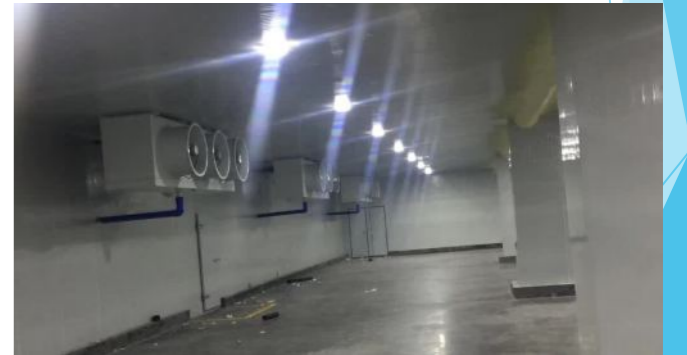
Fish factory project - Philippines



Suppermarket project - Panama



Fish factory project - Fiji



Warehouse project - USA