



YANGTZE COOLING ICE SYSTEM

2022 New Edition
Product Presentation

Yangtze Cooling Ice Systems Co., Ltd

Address: Xinan Wumagang, Sihui Zhaoqing City, Guangdong, China
TEL: +86-0757-81019142
E-mail: coldroom@yangtze cool.com
Website: www.yangtze cool.com



(Learn more)



Yangtze Cooling Ice Systems Co., Ltd



About Us

Yangzecoooling is a professional on the high quality polyurethane panels to construct coolrooms & freezers are light weight, high strength, good heat insulation, anti-corrosive, age-resistant, moth proof, non-poisonous and non-mould, preserving heat, easy assembling and disassembling.

Our product applications covers in wide ranges including: energy efficient cool rooms, freezers, mobile cool rooms, food processing plants, farm coolrooms, portable buildings, warehouse & factories, clean rooms, laboratories and hospitality applications.

Our core Service:
Production & Sales;
Design & installation;
Repair & maintenance.

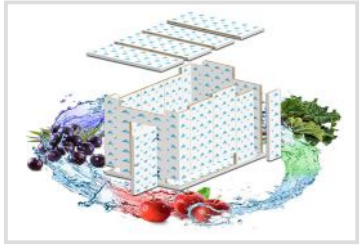


FOOD SAFETY

Food safety impacts our reputation and public health. Ensure food safety during entire refrigeration is our important job. The cold storage & refrigeration equipment units can be able to keeping all kinds of food and drinks which require changeable temperature.

ENVIRONMENT PROTECTION

We use environmental friendly R404A refrigerant. BITZER, COPELAND, SCHNEIDE Compressor series and refrigeration accessories units adopt strict German, American, French production procedures which reduces noise when operating.



Fresh Vegetable/Beverage/Fish/Meat/Cold Storage

- Polyurethane insulated panels, density 40-42/kg/m³ with fire retardant which are moulded with male / female joints and held by eccentric action cam-locks
- The visible exterior surfaces of the panels are coated, stainless steel with durable scratch resistant polyester, which is classified as food safe.

- Standard thickness
- Clean workshop/operation room: 50mm
- Vegetable/Beverage/storage of fresh meat or fish : 100mm
- Frozen storage select : 150mm
- Blast freezer select: 200mm

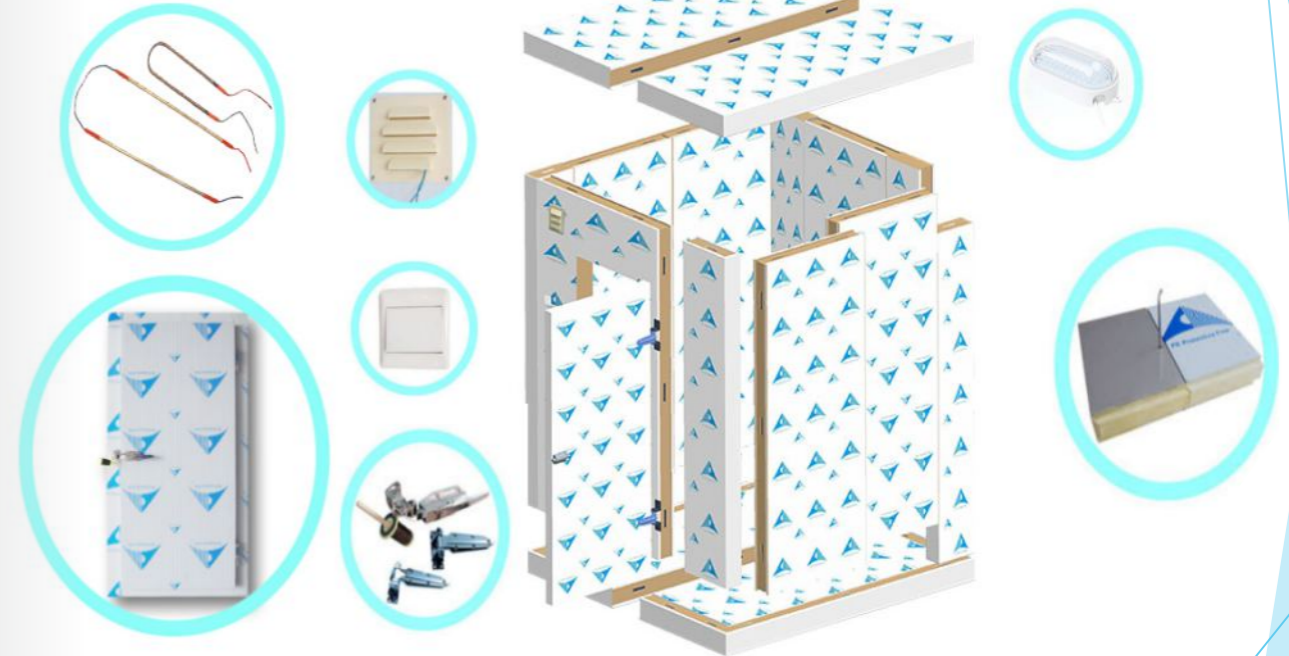


- Doors select swing door/sliding door/double open door

- Door are already pre-mounted on a panel for ease of assembly in the field.
- The door is supplied with hinges and a lockable door handle with a safe release, which overrides the lock at all times.
- Door threshold and surround is fitted with a heater to prevent freezing of the gasket to the frame in low temperature models.

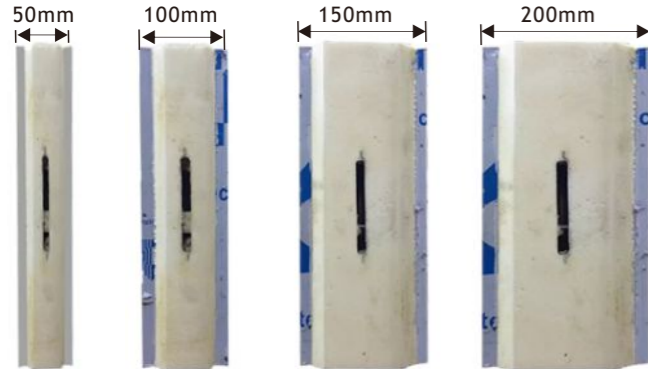


Cold Storage types	Cold temperature	Cold Storage uses
Chillerroom/ walk-in cold room	5 °C ~ -5 °C	Fruits, vegetables, flowers, dairy products, alcohol, chocolate, rice wine, fresh eggs, fresh meat and so on
Cold storage	-10 °C ~ -20 °C	Frozen fish, frozen meat, frozen poultry, frozen eggs and so on
Freezer storage	-20 °C ~ -35 °C	Fish, fresh and freeze rice products, ice cream, blood products, chemical raw materials and so on such as low-temperature storage
Other non-standard cold/Blast freezer	10 °C ~ -60 °C	Electronics, metallurgy, bio-pharmaceutical, chemical, automotive building materials industries such as aerospace industrial test ultra-low temperature freezer cold treatment



PU INSULATION PANEL

Panel Thickness	75/100/125/150/200mm
Average Density:	40-42kg/m ³
Temperature range:	+5~-10°C, -15~-60°C
Resistance to compression:	1.7kg/m ²
PPGI Sheet:	0.36 - 0.6mm
S/S Sheet:	0.46 - 0.8mm
Aluminum Sheet:	0.46 - 0.8mm
Max Length:	10,000mm
Max Corner:	950mm
Max Width:	450x450mm
Connect joint:	Cam-lock



PPGI



Aluminum



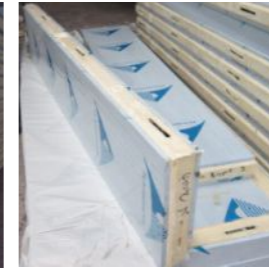
304 Stainless steel

DIAGRAM

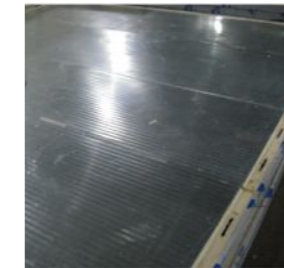
Connect : cam-lock



Wall / Ceiling panel/Corner - galvanize steel white coating



Floor panel - galvanize steel



Floor panel - aluminum



Cold storage accessories



Pressure gauge



Solenoid Valve



Gas-liquid separator



Vibration damper



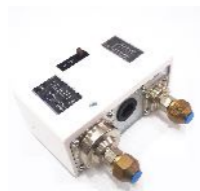
Safety Valve



Danfoss filter



Emerson Drying filter



pressure controller



Danfoss sight glass



Expansion valve (Danfoss)



fan



Elbow



Copper piper



Air conditioning cable tie



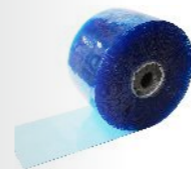
Aluminum foil tape



Cap nut



Copper expander Kit



PVC curtain



Copper-phosphorus solder



Parallel connection



Air conditioning cable tie



Emkarate RL Frozen oil



Welding suit welding tools



Insulation pipe



Door Hinge & Lock



High/Low Pressure gauge



Defrosting heater



LED lights(10W)
Temperature range: 0°C~45°C



LED lights(20W)
Temperature range: 0°C~45°C

Project case display



Fruit & Vegetable project-China



Meat factory project - Philippines



Lab project-China



Warehouse project - USA



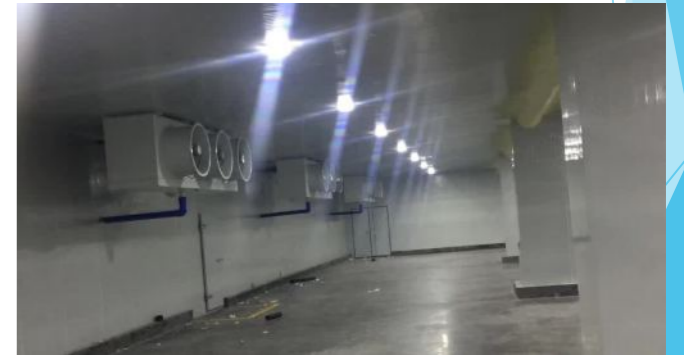
Fish factory project - Philippines



Suppermarket project - Panama



Fish factory project - Fiji



Warehouse project - USA

Packing/loading

Panel packing: PVC film/carton corner/wooden carton(if shipping by LCL)



Evaporator packing:
Wooden carton



Equipment packing:
Wooden carton



Loaded container



Installation

